

# Science in Focus: Life Science 3

## Programme 1: Life blood

### Answersheet 1 and 2

Figure 1: Circulatory system

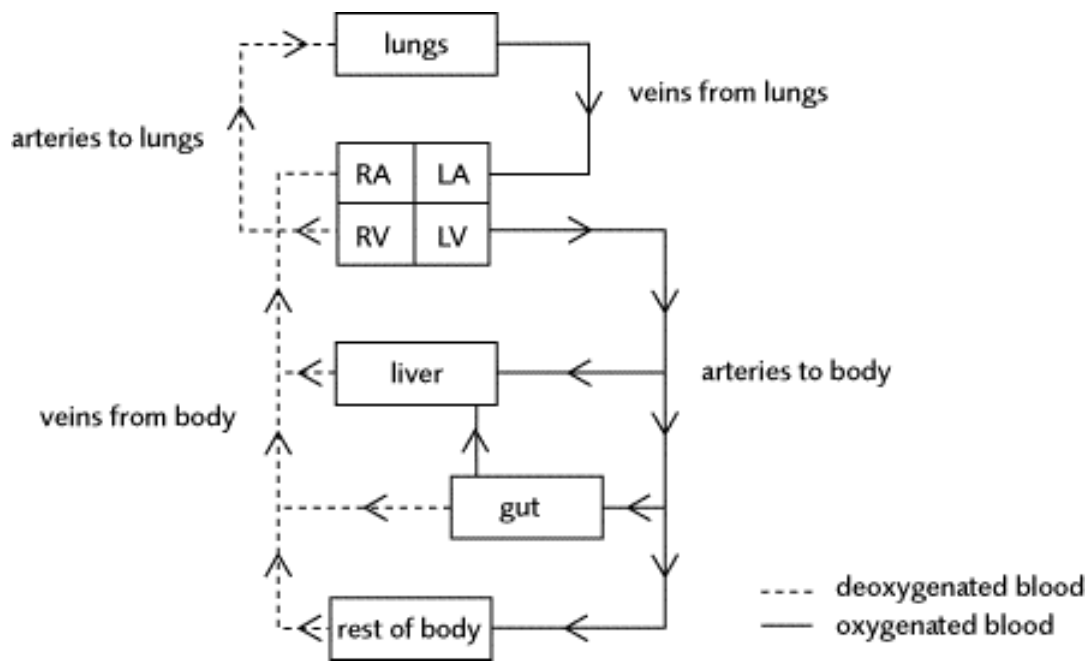
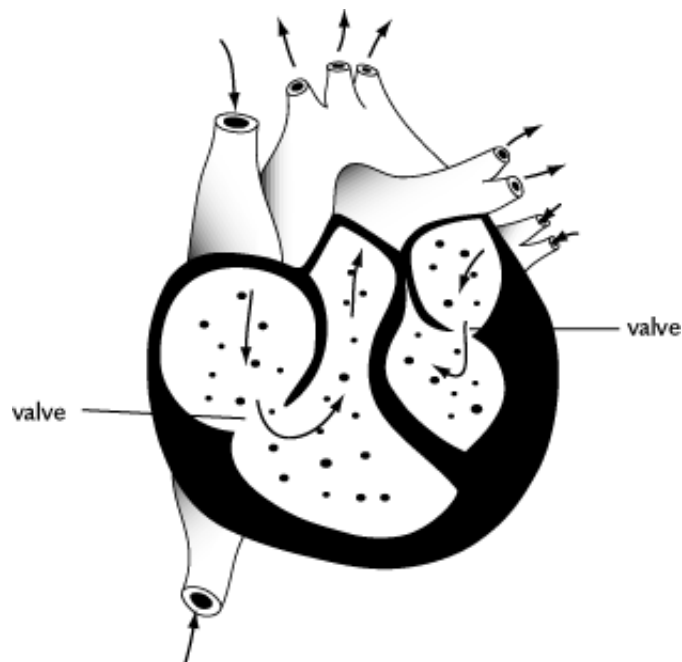


Figure 2: Cross-section of heart indicating blood flow and position of valves

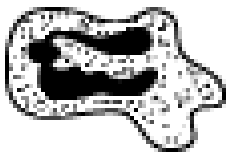

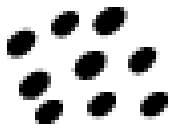


# Science in Focus: Life Science 3

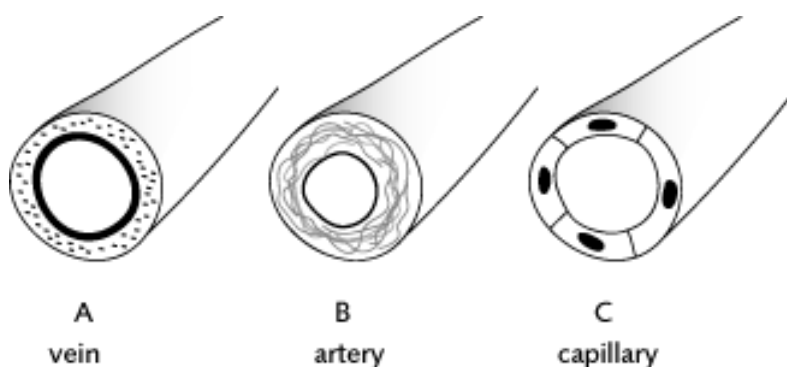
## Programme 1: Life blood

### Answersheet 3 and 4

**Table 1: Blood cells**

Cells (not to scale)	Name	Uses
	Red blood cell (erythrocyte)	Contains the chemical haemoglobin. Used for carrying oxygen to the working cells where it is released.
	White blood cell (leucocyte)	Helps the body to fight disease by, for example, ingesting harmful bacteria.
	Platelet	Used in the clotting of blood.

**Figure 3: Blood vessels**

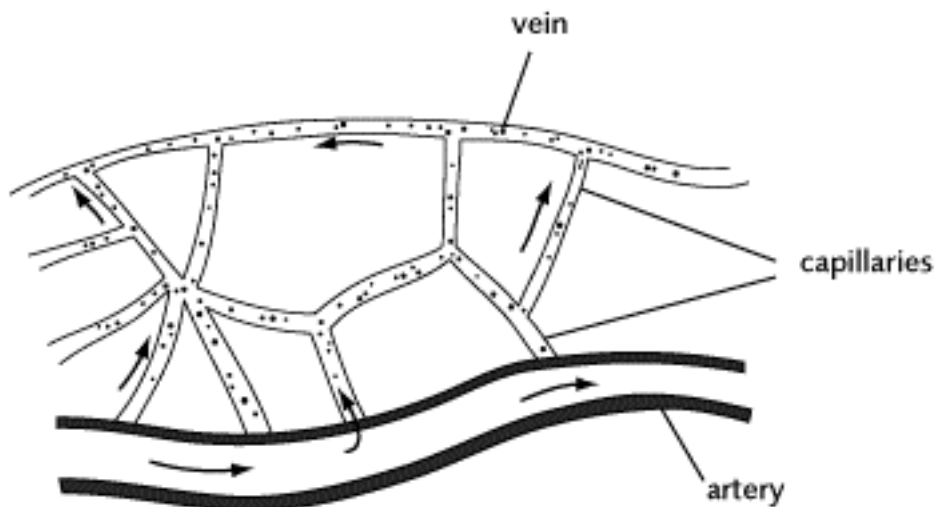


# Science in Focus: Life Science 3

## Programme 1: Life blood

### Answersheet 4

**Figure 3a: Capillary network**



**NB:** Any network is acceptable as long as it shows a capillary connection between an artery and a vein.